

RNAV (GPS) RWY 35

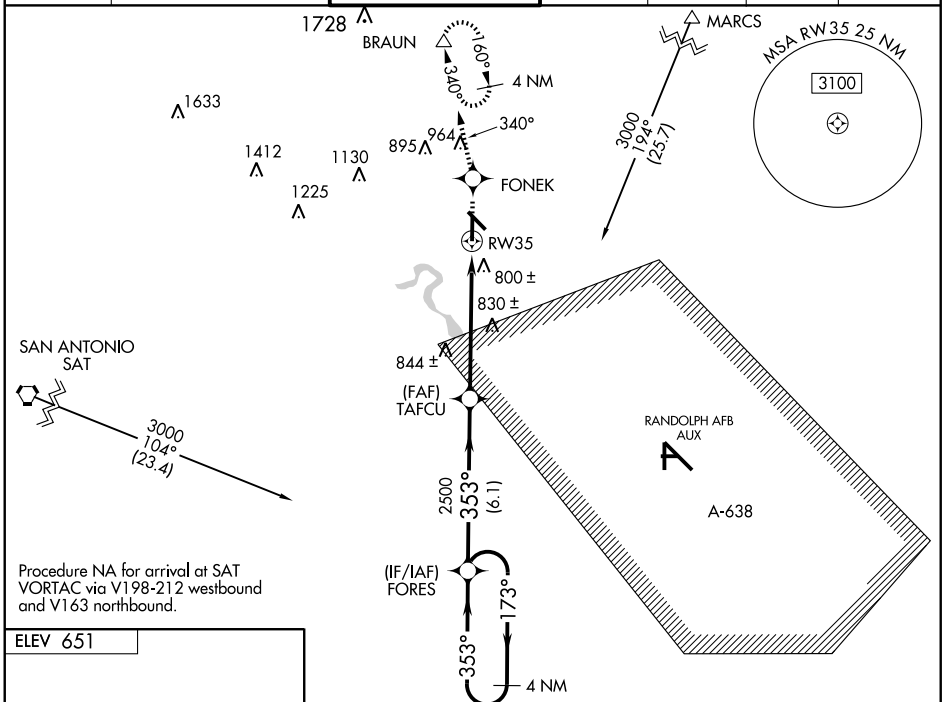
NEW BRAUNFELS MUNI (B.A.Z)

WAAS CH 93900 W35A	APP CRS 353°	Rwy Idg TDZE Apt Elev	5364 650 651
--	------------------------	-----------------------------	---

When local altimeter setting not received, use San Marcos Muni altimeter setting and increase all DAs 42 feet LPV visibility 1/4 all Cats, increase all MDAs 60 feet LNAV and circling visibility Cat C and D 1/4. VDP and Baro-VNAV NA when using San Marcos Muni altimeter setting. For uncompensated Baro-VNAV systems, LNAV/VNAV NA below -16°C (4°F) or above 47°C (116°F). DME/DME RNP-0.3 NA.

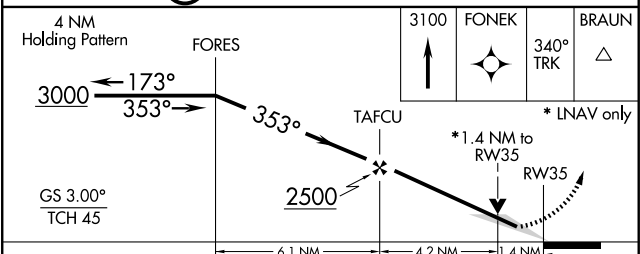
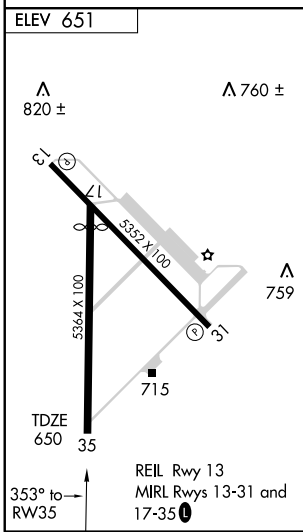
MISSED APPROACH: Climb to 3100 direct FONEK and via 340° track to BRAUN and hold, continue climb-in-hold to 3100.

ATIS 119.325	SAN ANTONIO APP CON 124.45 335.625	NEW BRAUNFELS TOWER * 127.05 285.4	GND CON 120.175	CLNC DEL 134.75	UNICOM 122.7	CTAF 127.05 (1)
------------------------	--	--	---------------------------	---------------------------	------------------------	----------------------------------



SC-3, 01 JUL 2010 to 29 JUL 2010

SC-3, 01 JUL 2010 to 29 JUL 2010



CATEGORY	A	B	C	D
LPV DA	929-1		279 (300-1)	
LNAV/VNAV DA	1110-1 3/4		460 (500-1 3/4)	
LNAV MDA	1140-1	490 (500-1)	1140-1 1/4 490 (500-1 1/4)	1140-1 1/2 490 (500-1 1/2)
CIRCLING	1140-1	489 (500-1)	1280-1 3/4 629 (700-1 3/4)	1280-2 629 (700-2)